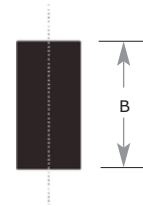


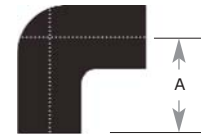
* SP8 SERIES	Nominal Size	A	B	C	Pressure Rating
	Inches (mm)	Inches (mm)	Inches (mm)	Inches (mm)	PSI (MPa)
	2 (50)	5.12 (130.1)	6.25 (158.8)	4.62 (117.3)	3000 (20.7)
	2½ (65)	5.87 (149.1)	6.75 (171.5)	5.00 (127.0)	2500 (17.2)
	3 (75)	6.62 (168.1)	7.25 (184.2)	5.45 (138.4)	2500 (17.2)
	4 (100)	8.27 (210.1)	8.30 (210.8)	6.37 (161.8)	2000 (13.8)
	6 (150)	9.75 (247.7)	9.50 (241.3)	8.03 (204.0)	1750 (12.1)
	8 (200)	11.70 (297.2)	11.0 (279.4)	9.30 (235.2)	1000 (6.7)

COUPLING



SP SERIES	Nominal Size	A	B	C	Pressure Rating
	Inches (mm)	Inches (mm)	Inches (mm)	Inches (mm)	PSI (MPa)
	1½ (40)	6.25 (158.8)	9.00 (228.6)	5.75 (146.1)	3500 (24.1)
	2 (50)	6.56 (166.6)	9.12 (231.6)	6.06 (153.9)	3500 (24.1)
	2½ (65)	7.00 (177.8)	9.00 (228.6)	6.20 (157.5)	3500 (24.1)
	3 (75)	7.50 (190.5)	9.00 (228.6)	6.30 (160.0)	3000 (20.7)
	4 (100)	8.50 (215.9)	9.00 (228.6)	6.70 (170.2)	1500 (10.3)
	5 (125)	9.00 (228.6)	9.00 (228.6)	8.25 (209.6)	1500 (10.3)
	6 (150)	9.50 (241.3)	9.00 (228.6)	7.50 (190.5)	1000 (6.7)

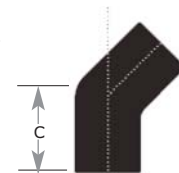
90° ELBOW



* SPH SERIES	Nominal Size	A	B	C	Pressure Rating
	Inches (mm)	Inches (mm)	Inches (mm)	Inches (mm)	PSI (MPa)
	4 (100)	8.50 (215.9)	9.00 (228.6)	6.75 (171.5)	3000 (20.7)
	6 (150)	11.00 (279.8)	12.0 (304.8)	9.28 (235.7)	2500 (10.3)
	8 (200)	12.20 (309.9)	12.0 (304.8)	9.80 (248.9)	1000 (6.7)
	10 (250)	12.87 (321.9)	12.0 (304.8)	10.00 (254.0)	800 (5.5)

45° ELBOW

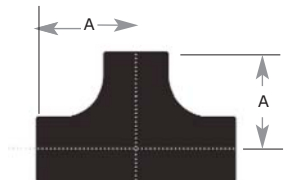
11¼°, 22½°, 30° & 60° also available



CEN SERIES	Nominal Size	A	B	C	Pressure Rating
	Inches (mm)	Inches (mm)	Inches (mm)	Inches (mm)	PSI (MPa)
	2 (50)	6.00 (152.4)	8.5 (215.9)	5.49 (139.4)	800 (5.5)
	3 (75)	7.00 (177.8)	8.5 (215.9)	5.74 (145.8)	800 (5.5)
	4 (100)	8.00 (203.2)	8.5 (215.9)	6.25 (158.8)	800 (5.5)

TEE

Reducing Tees also available



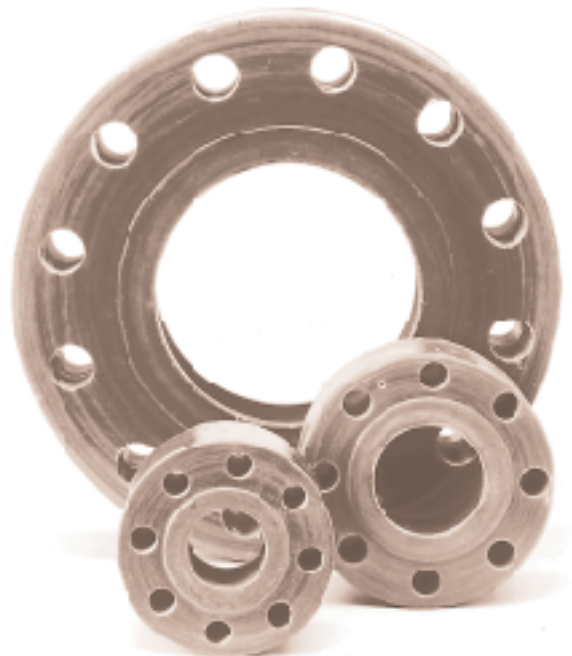
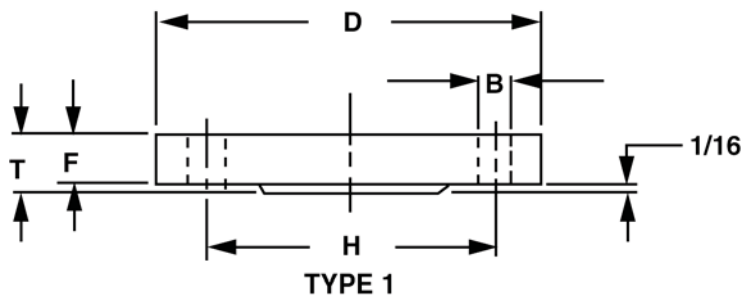
- Note: 1. All stock fittings are rated equal to the highest pressure rating of the matching pipe in a given size and series.
 2. Concentric reducers, both single and multiple step, are available. Crossover fittings are also available.
 * Higher pressure ratings are available on 6" and 8" products.
 Consult Centron Engineering for details.



Pipe Size	ANSI Rating*	Nominal Outside Dia. (D) Inches	Flange Thickness (F) Inches	Overall Thickness (T) Inches	Bolt Circ Dia. (H) Inches	Required Number Bolts	Hole (B) Size Inches	Bolt Size Inches	Bolt Length Inches ¹
2 CEN	150#	6	2	2.06	4 ³ / ₄	4	3/4	5/8	6
3 CEN	150#	7 ¹ / ₂	2 ¹ / ₂	2.56	6	4	3/4	5/8	6 ³ / ₄
4 CEN	150#	9	3	3.06	7 ¹ / ₂	8	3/4	5/8	7 ³ / ₄
2 CEN	300#	6 ¹ / ₂	2	2.06	5	8	3/4	5/8	5 ³ / ₄
3 CEN	300#	8 ¹ / ₄	2 ¹ / ₂	2.56	6 ⁵ / ₈	8	7/8	3/4	7
4 CEN	300#	10	3	3.06	7 ⁷ / ₈	8	7/8	3/4	8 ¹ / ₄
2 CEN	600#	6 ¹ / ₂	2	2.06	5	8	3/4	5/8	5 ³ / ₄
3 CEN	600#	8 ¹ / ₄	2 ¹ / ₂	2.56	6 ⁵ / ₈	8	7/8	3/4	7
4 CEN	600#	10 ³ / ₄	3	3.06	8 ¹ / ₂	8	1	7/8	8 ¹ / ₂
2 CEN	900#	8 ¹ / ₂	2	2.06	6 ¹ / ₂	8	1	7/8	6 ¹ / ₂
3 CEN	900#	9 ¹ / ₂	2 ¹ / ₂	2.56	7 ¹ / ₂	8	1	7/8	7 ¹ / ₄
4 CEN	900#	11 ¹ / ₂	3	3.06	9 ¹ / ₄	8	1 ¹ / ₄	1 ¹ / ₈	8 ³ / ₄
2 CEN	1500#	6 ¹ / ₂	2	2.06	5	8	3/4	5/8	5 ³ / ₄
3 CEN	1500#	10 ¹ / ₂	2 ¹ / ₂	2.56	8	8	1 ¹ / ₄	1 ¹ / ₈	7 ³ / ₄
4 CEN	1500#	12 ¹ / ₄	3	3.06	9 ¹ / ₂	8	1 ³ / ₈	1 ¹ / ₄	9

*Dimensions, except thickness, per ANSI B16.5

1. Bolt length is minimum for fiberglass to fiberglass using threaded rod, 2 nuts and 2 SAE washers.



Fittings
High Pressure Line Pipe Flange Specifications

Pipe Size	ANSI Rating*	Nominal Outside Dia. (D) Inches	Overall Thickness (T) Inches	Bolt Circ Dia. (H) Inches	Required Number Bolts	Hole (B) Size Inches	Bolt Size Inches	Bolt Length Inches ¹	Recommended Bolt Torque ft - lbs	
1 1/2	SP	150#	5.0	4.5	3.88	4	5/8	1/2	10 ^{7/8}	60
2	SP	150#	6.0	4.5	4.75	4	3/4	5/8	11 ^{1/8}	120
2 1/2	SP	150#	7.0	4.5	5.50	4	3/4	5/8	11 ^{1/8}	120
3	SP	150#	7.5	4.5	6.00	4	3/4	5/8	11 ^{1/8}	120
4	SP	150#	9.0	4.5	7.50	8	3/4	5/8	11 ^{1/8}	120
4	SPH	150#	9.0	4.5	7.50	8	3/4	5/8	12 ^{1/8}	120
5	SP	150#	10.0	4.5	8.50	8	7/8	3/4	11 ^{1/4}	150
6	SP	150#	11.0	4.5	9.50	8	7/8	3/4	11 ^{1/4}	200
6	SPH	150#	11.0	6.0	9.50	8	7/8	3/4	14 ^{3/4}	200
8	SP	150#	13.5	6.0	11.75	8	7/8	3/4	14 ^{3/4}	200
10	SPH	150#	16.0	6.0	14.25	12	1	7/8	14 ^{3/4}	320
1 1/2	SP	300#	6.1	4.5	4.50	4	7/8	3/4	11 ^{1/4}	200
2	SP	300#	6.5	4.5	5.00	8	3/4	5/8	10 ^{7/8}	200
2 1/2	SP	300#	7.5	4.5	5.88	8	7/8	3/4	11 ^{1/4}	200
3	SP	300#	8.2	4.5	6.62	8	7/8	3/4	11 ^{1/4}	200
4	SP	300#	10.0	4.5	7.88	8	7/8	3/4	11 ^{1/4}	200
4	SPH	300#	10.0	4.5	7.88	8	7/8	3/4	12 ^{1/4}	200
5	SP	300#	11.0	4.5	9.25	8	7/8	3/4	11 ^{1/4}	200
6	SP	300#	12.5	4.5	10.62	12	7/8	3/4	11 ^{1/4}	200
6	SPH	300#	12.5	6.0	10.62	12	7/8	3/4	14 ^{3/4}	200
8	SPH	300#	16.5	6.0	13.00	12	1	7/8	15 ^{1/4}	320
10	SPH	300#	17.5	6.0	15.25	16	1 ^{1/8}	1	15 ^{1/4}	350
1 1/2	SP	600#	6.1	4.5	4.50	4	7/8	3/4	11 ^{1/4}	200
2	SP	600#	6.5	4.5	5.00	8	3/4	5/8	10 ^{7/8}	200
2 1/2	SP	600#	7.5	4.5	5.88	8	7/8	3/4	11 ^{1/4}	200
3	SP	600#	8.2	4.5	6.62	8	7/8	3/4	11 ^{1/4}	200
4	SP	600#	10.75	4.5	8.5	8	1	7/8	11 ^{1/2}	250
4	SPH	600#	10.75	4.5	8.5	8	1	7/8	12 ^{1/2}	250
5	SP	600#	13.00	4.5	10.50	8	1 ^{1/8}	1	11 ^{3/4}	250
6	SP	600#	14.00	4.5	11.50	12	1 ^{1/8}	1	11 ^{3/4}	250
6	SPH	600#	14.00	6.0	11.50	12	1 ^{1/8}	1	16	250
8	SPH	600#	16.50	6.0	13.75	12	1 ^{1/4}	1 ^{1/8}	16 ^{1/4}	350
10	SPH	600#	20.00	6.0	17.00	16	1 ^{3/8}	1 ^{1/4}	16 ^{1/4}	375

*Dimensions, except thickness, per ANSI B16.5

Bolt length is minimum for fiberglass to fiberglass using threaded rod, 2 nuts and 2 SAE washers.

¹ For CEN product the recommended torque is 120 ft-lbs.

Spiral wound gaskets are acceptable, however, Graph-Lock® gaskets (TC 3125) can be used up through ANSI 600#.

Fittings

High Pressure Line Pipe Flange Specifications

Pipe Size	ANSI Rating*	Nominal Outside Dia. (D) Inches	Overall Thickness (T) Inches	Bolt Circ Dia. (H) Inches	Required Number Bolts	Hole (B) Size Inches	Bolt Size Inches	Bolt Length Inches ¹	Bolt Torque
1 1/2 SP	900#	7.00	4.5	4.88	4	1 1/8	1	11 5/8	200
2 SP	900#	8.50	4.5	6.50	8	1	7/8	11 1/2	200
2 1/2 SP	900#	9.62	4.5	7.50	8	1 1/8	1	11 5/8	200
3 SP	900#	9.50	4.5	7.50	8	1	7/8	11 1/2	200
4 SP	900#	11.50	4.5	9.25	8	1 1/4	1 1/8	11 7/8	200
4 SPH	900#	11.50	4.5	9.25	8	1 1/4	1 1/8	12 7/8	200
5 SP	900#	13.75	4.5	11.00	8	1 1/8	1 1/4	12	275
6 SP	900#	15.00	4.5	12.50	12	1 1/4	1 1/8	11 7/8	275
6 SPH	900#	15.00	6.0	12.50	12	1 1/4	1 1/8	16 1/4	275
8 SPH	900#	18.50	6.0	15.50	12	1 1/2	1 1/8	16 1/2	350
10 SPH	900#	21.50	6.0	18.50	16	1 1/2	1 3/8	16 1/2	375
1 1/2 SP	1500#	7.00	4.5	4.88	4	1 1/8	1	11 5/8	200
2 SP	1500#	8.50	4.5	6.50	8	1	7/8	11 1/2	200
2 1/2 SP	1500#	9.62	4.5	7.50	8	1 1/8	1	11 5/8	200
3 SP	1500#	10.50	4.5	8.00	8	1 1/4	1 1/8	11 7/8	200
4 SP	1500#	12.25	4.5	9.50	8	1 3/8	1 1/4	12	200
4 SPH	1500#	12.25	4.5	9.50	8	1 3/8	1 1/4	13	200
5 SP	1500#	14.75	4.5	11.50	8	1 5/8	1 1/2	12 3/4	350
6 SP	1500#	15.50	4.5	12.50	12	1 1/2	1 3/8	12 1/4	350
6 SPH	1500#	15.50	6.0	12.50	12	1 1/2	1 3/8	16 1/2	350
8 SPH	1500#	19.00	6.0	15.50	12	1 3/4	1 5/8	16 3/4	450
10 SPH	1500#	23.00	6.0	19.00	12	2 1/8	2	17	475

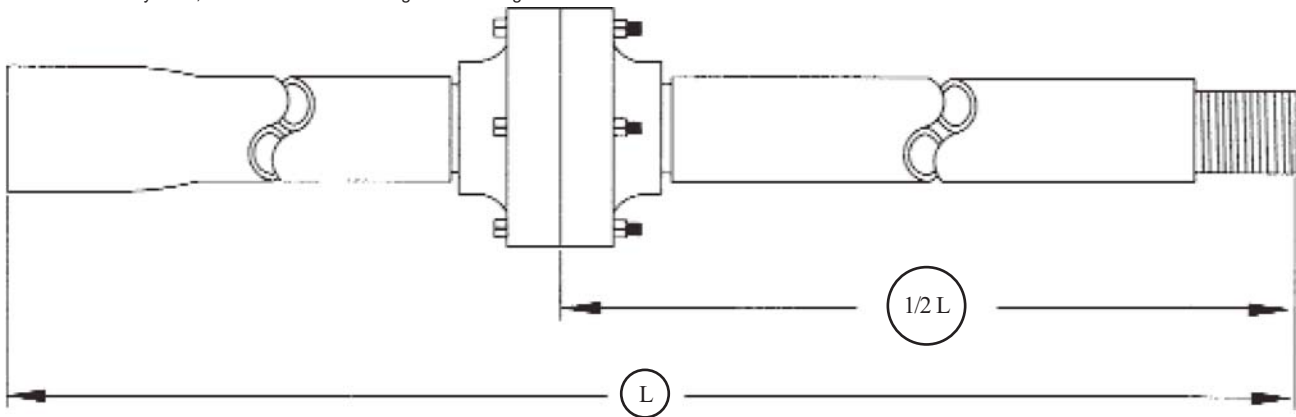
*Dimensions, except thickness, per ANSI B16.5

¹Bolt length is minimum for fiberglass to fiberglass using threaded rod, 2 nuts and 2 SAE washers.



Length (L) (Feet*)	Pipe Type	
29.16	SPH	Centron line pipe joints are of constant length. Centron repair joints can be installed easily without cutting or custom fitting and require no adhesives.
29 1/2*	SP, SP8	
30*	CEN	

* Effective November 2009, 6-inch and greater are 29.16 feet in length. Other lengths are available.
 Effective January 2010, 4-inch is 29.16 feet in length. Other lengths are available.



Size	Pipe Type	L (Feet)	2A (Inches)	T (Inches)	
2	CEN	30	12	4.12	For insertion into existing flow or injection lines for new lateral hookups.
3	CEN	30	14	5.12	
4	CEN	30	16	6.12	
1 1/2	SP	29.5	13	9.12	
2	SP/SP8	29.5	13.12	9.12	
2 1/2	SP/SP8	29.5	14	9.12	
3	SP/SP8	29.5	15	9.12	
4	SP & SPH/SP8	29.5/29.16	17	9.12	
6	SPH/SP8	29.16	22	12.12	
8	SPH/SP8	29.16	24.5	12.12	
10	SPH	29.16	25.25	12.12	

*See fittings for various ANSI Flange thicknesses.

